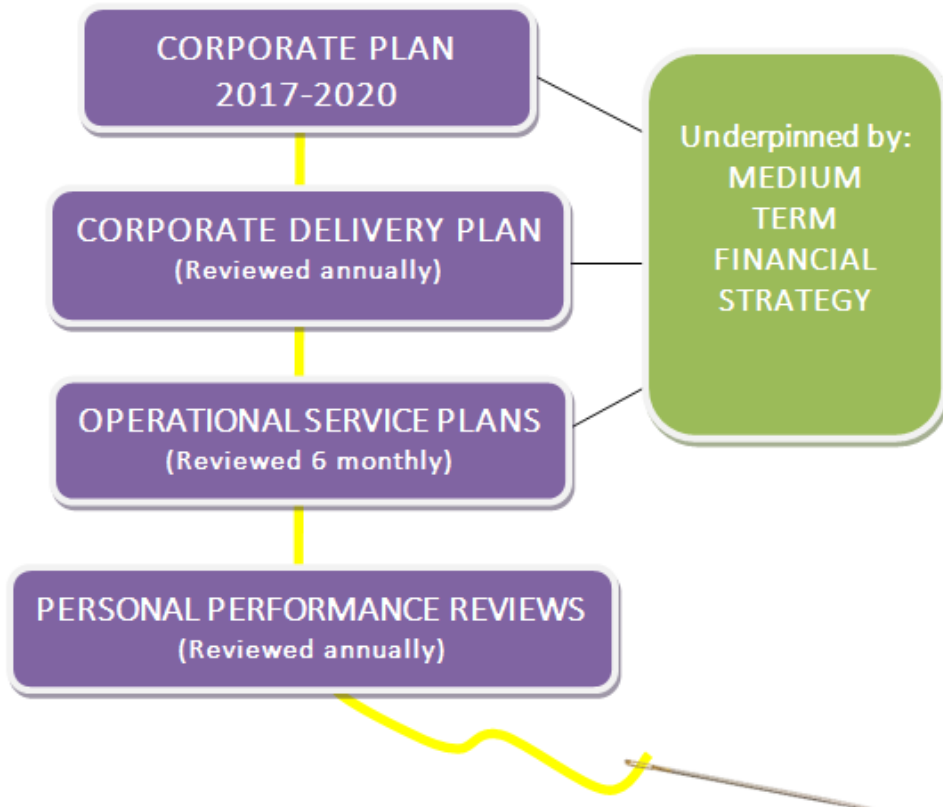
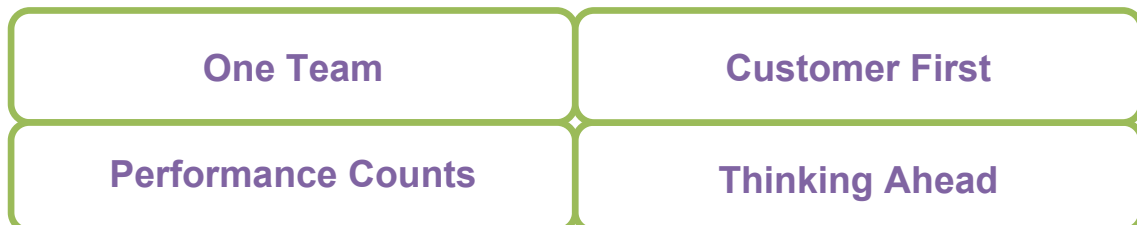


## *How It All Fits Together*



## *Supported by the Core Values*



## *Monitoring progress*

The supporting Corporate Delivery Plan will be reviewed annually to ensure it reflects the council's priorities and react to local and central government changes.

Service plans are reviewed on a six monthly basis and based on service budgets.

Personal performance reviews are undertaken annually and assist employees to understand their contribution to the corporate plan.

## *Contact us*

For additional information on the corporate plan please contact:

Leadership Support Team by:

Email: [leadership.support@shepway.gov.uk](mailto:leadership.support@shepway.gov.uk); or

Telephone: 01303 853232